

Dashes to Indicate

The Double Dash



The dash is a punctuation mark which can be used when you want to **emphasise additional information**.

Dashes **may be used in pairs** when they **separate** the words from the surrounding text.

For example:

The man was plainly dressed - so he would not be noticed - in a black suit.

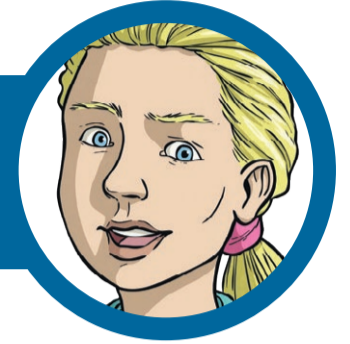
The sentence would still make sense without the part within the dashes.

There is a space on either side of the dash.

This part of the sentence gives extra information so this part could be removed.

icate Parenthesis

The Dramatic Dash



Whereas brackets must always be used in pairs, **only one dash is required if the parenthesis comes at the end of a sentence.** A dash found by itself can be **used to separate something dramatic** (and usually contrasting) at the end of a sentence from the start of the sentence.

The idea is to **shock/surprise** the reader at the very end of the sentence.

For example:

It was a long wait - perhaps the longest of his life.

This sentence would still make sense without the part after the dash.

There should be a space before and after the dash.

This information creates a surprise at the end of the sentence.

Dashes to Indicate

The Double Dash



The dash is a punctuation mark which can be used when you want to **emphasise additional information**.

Dashes **may be used in pairs** when they **separate** the words from the surrounding text.

For example:

The man was plainly dressed - so he would not be noticed - in a black suit.

The sentence would still make sense without the part within the dashes.

There is a space on either side of the dash.

This part of the sentence gives extra information so this part could be removed.

icate Parenthesis

The Dramatic Dash



Whereas brackets must always be used in pairs, **only one dash is required if the parenthesis comes at the end of a sentence.** A dash found by itself can be **used to separate something dramatic** (and usually contrasting) at the end of a sentence from the start of the sentence.

The idea is to **shock/surprise** the reader at the very end of the sentence.

For example:

It was a long wait - perhaps the longest of his life.

This sentence would still make sense without the part after the dash.

There should be a space before and after the dash.

This information creates a surprise at the end of the sentence.

icate Parenthesis

The Dramatic Dash



Whereas brackets must always be used in pairs, **only one dash is required if the parenthesis comes at the end of a sentence.**

A dash found by itself can be **used to separate something dramatic** (and usually contrasting) at the end of a sentence from the start of the sentence.

The idea is to **shock/surprise** the reader at the very end of the sentence.

For example:

The man was plainly dressed - so he would not be noticed - in a black suit.

The sentence would still make sense without the part within the dashes.

There is a space on either side of the dash.

This part of the sentence gives extra information so this part could be removed.

the sentence.

For example:

It was a long wait - perhaps the longest of his life.

This sentence would still make sense without the part after the dash.

There should be a space before and after the dash.

This information creates a surprise at the end of the sentence.

Dashes to Indicate Parenthesis

The Double Dash



The dash is a punctuation mark which can be used when you want to **emphasise additional information**.

Dashes **may be used in pairs** when they **separate** the words from the surrounding text.

For example:

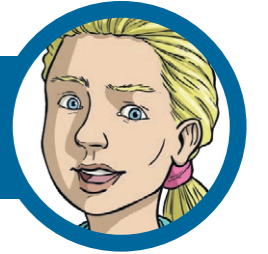
The man was plainly dressed - so he would not be noticed - in a black suit.

The sentence would still make sense without the part within the dashes.

There is a space on either side of the dash.

This part of the sentence gives extra information so this part could be removed.

The Dramatic Dash



Whereas brackets must always be used in pairs, **only one dash is required if the parenthesis comes at the end of a sentence**. A dash found by itself can be **used to separate something dramatic** (and usually contrasting) at the end of a sentence from the start of the sentence.

The idea is to **shock/surprise** the reader at the very end of the sentence.

For example:

It was a long wait - perhaps the longest of his life.

This sentence would still make sense without the part after the dash.

There should be a space before and after the dash.

This information creates a surprise at the end of the sentence.

Dashes to Indicate Parenthesis

The Double Dash



The dash is a punctuation mark which can be used when you want to **emphasise additional information**.

Dashes **may be used in pairs** when they **separate** the words from the surrounding text.

For example:

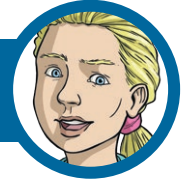
The man was plainly dressed - so he would not be noticed - in a black suit.

The sentence would still make sense without the part within the dashes.

There is a space on either side of the dash.

This part of the sentence gives extra information so this part could be removed.

The Dramatic Dash



Whereas brackets must always be used in pairs, **only one dash is required if the parenthesis comes at the end of a sentence**.

A dash found by itself can be **used to separate something dramatic** (and usually contrasting) at the end of a sentence from the start of the sentence.

The idea is to **shock/surprise** the reader at the very end of the sentence.

For example:

It was a long wait - perhaps the longest of his life.

This sentence would still make sense without the part after the dash.

There should be a space before and after the dash.

This information creates a surprise at the end of the sentence.